

ER230-3100

EFORT

ER230-3100,
Maxium payload 230 kg with maxium reach 3098 mm.

■ **Highlights**

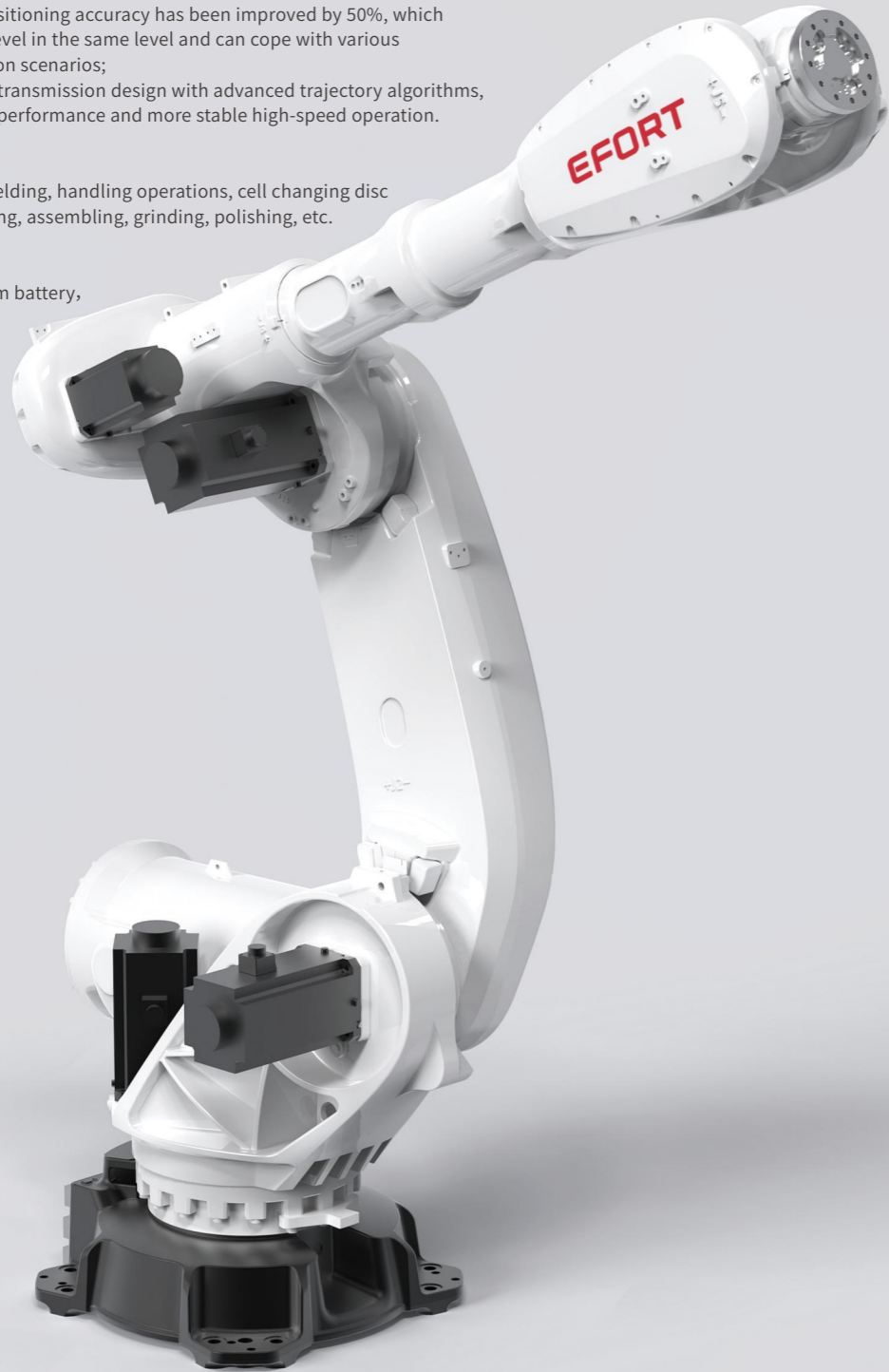
A brand new heavy-duty platform product, with all shafts connected by rigid gears, providing superior torque performance for the robot wrist; The robot's repeated positioning accuracy has been improved by 50%, which belongs to the leading level in the same level and can cope with various high-precision application scenarios; Combining high rigidity transmission design with advanced trajectory algorithms, it has stronger dynamic performance and more stable high-speed operation.

■ **Applications**

It can be used in Spot welding, handling operations, cell changing disc and group disc, palletizing, assembling, grinding, polishing, etc.

■ **Industries**

Suitable for auto, Lithium battery, photovoltaic, food and beverage, building materials, logistics and warehousing and other industries.

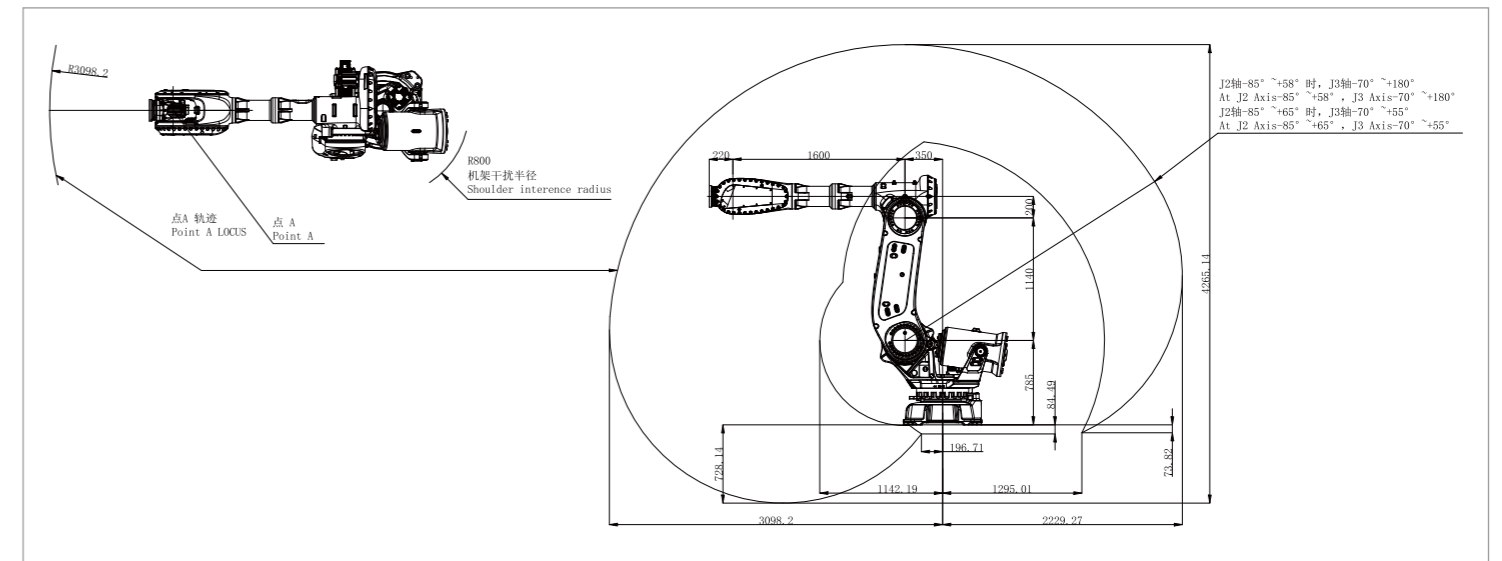


SPECIFICATIONS

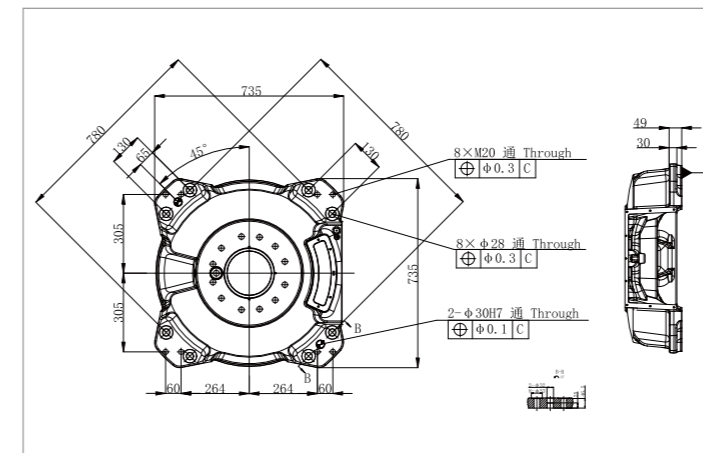
Model	ER230-3100	
Type	Articulated	
Controlled axes	6 Axes	
Max. payload on wrist	230 kg	
Repeatability	±0.05 mm	
Robot weight	1600 kg	
Reach	3098 mm	
Robot IP grade	IP65	
Cabinet IP grade	IP54	
Drive mode	AC servo drive	
Installation	Floor	
Installation enviroment	Ambient temperature	0~45 °C
	Ambient humidity	RH≤80% (No dew nor frost allowed)
	Vibration acceleration	4.9 m/s ² (<0.5 G)

Allowable load moment at wrist	J4	1830 N·m
	J5	1830 N·m
	J6	900 N·m
Allowable load inertia at wrist	J4	325 kg·m ²
	J5	325 kg·m ²
	J6	230 kg·m ²
Maximum speed	J1	105°/sec
	J2	100°/sec
	J3	110°/sec
	J4	140°/sec
	J5	110°/sec
	J6	180°/sec
Motion range	J1	±185°
	J2	+65°-85°
	J3	+180°-70°
	J4	±360°
	J5	±130°
	J6	±360°

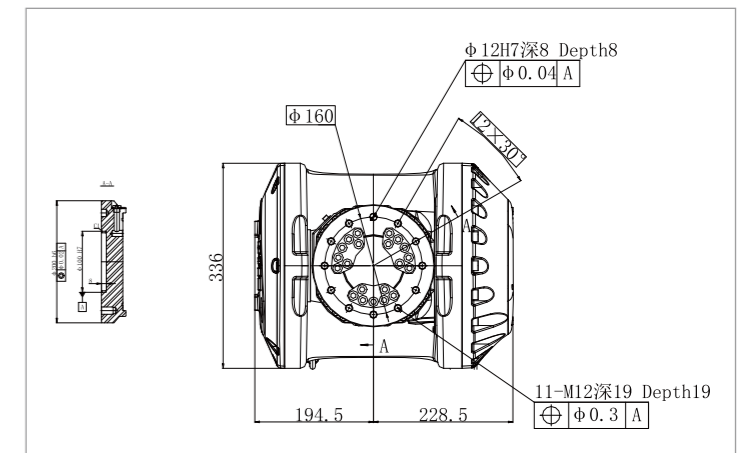
OPERATING SPACE



BASE MOUNTING SIZE



END FLANGE MOUNTING SIZE



EFORT Intelligent Robot Co., Ltd.
 PHONE: (00 86) 400-052-8877
 ADDRESS: No. 96, Wanchun East Road, Wuhu, China
 (Anhui) Pilot Free Trade Zone
 WWW.EFORT.COM.CN

*The final interpretation right belongs to EFORT Intelligent Robot Co., Ltd. Any updates will be made without prior notice.